

054383

RECEIVED  
LARAMIE COUNTY  
CHEYENNE, WY.

CERTIFIED LAND CORNER RECORDATION

DESCRIPTION OF CORNER EVIDENCE FOUND, AND ORIGINAL RECORD FILED FEB 21 PM 1 10

S.11 S.12  
S.14 S.13  
T.14N., R.70W.  
6th P.M.

Found G.L.O. Brass Cap stamped as shown below on top rocky point, in mound of stone.

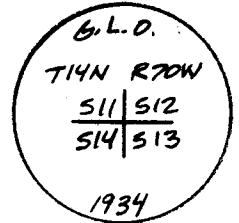
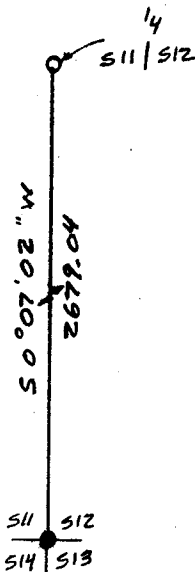
G.L.O. Record: Set 2" diameter x 3' long iron post, 27" in ground with Brass Cap marked as shown below.

DESCRIPTION OF MONUMENT AND ACCESSORIES ESTABLISHED TO PERPETUATE THE ORIGINAL LOCATION OF THIS CORNER:

At the corner: Not remonumented.

Accessories : See ties below.

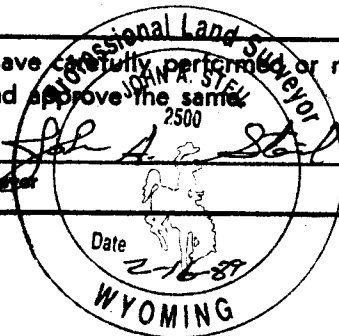
SKETCH, WITH COURSE AND DISTANCE TO ADJACENT CORNER IF DETERMINED IN THIS SURVEY. (May Sketch or Paste Reproduction on Reverse Side.)



I, John A. Steil certify that I have carefully performed or reviewed the work done on the diagrammed corner as reported on this recordation form and approve the same.

Signature of Surveyor

L.S. 2500  
Registration No.



STATE OF WYOMING,  
Office of Clerk and Recorder,  
County of \_\_\_\_\_

This "corner record" was filed for record on the \_\_\_\_\_ day of \_\_\_\_\_, 19\_\_\_\_, was noted on the cross-index plat and is assigned page No. \_\_\_\_\_, in book No. \_\_\_\_\_

James C. Whitehead  
County Official

Cross Index No.	J-21	T. 14N	R. 70W	Mer. 6th
_____	_____	T. _____	R. _____	Mer. _____
_____	_____	T. _____	R. _____	Mer. _____
_____	_____	T. _____	R. _____	Mer. _____
_____	_____	T. _____	R. _____	Mer. _____
_____	_____	T. _____	R. _____	Mer. _____
_____	_____	T. _____	R. _____	Mer. _____